

Name: KEY



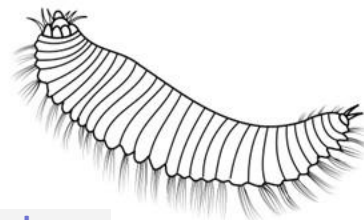
Shape of Life

SHAPE OF LIFE: ANNELIDA

1. How many species of annelids have scientists identified? 15,000 (note: this number is dated)

2. What are some of the habitats that annelids have adapted to?

Mud, hard and rocky substrates, the deep sea, the intertidal zone



3. Describe how the sabellid eats.

The head of the sabellid blooms out from the sediment and filters food from the water. When the sabellid is finished eating, it retracts its head into the soil.

4. What is on each appendage of the feather duster worm?

They have tiny eyes for detecting danger.

5. Annelids have a flexible segmented body along with a set of powerful muscles.

6. Do annelids have a nervous system and/or circulatory system? Yes!

7. What was the worm abarenicola very skilled at doing? Burrowing

8. How do diopatra, a tube-dwelling worm, positively benefit the mud flats that they exist within?

Diopatra create root-like tubes, which stabilize the mud habitat and hold the sediment together, providing a more permanent habitat for other organisms in the area.

9. How do diopatra make tubes?

Diopatra have glands behind their head which secrete a glue-like substance. They combine this glue with sand and bits of shell.

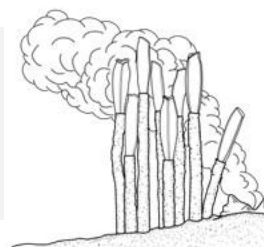
10. Where do diopatra go when the tide recedes? They retract back into their tubes

11. Where do giant tube worms live?

Giant tube worms live deep in the ocean at the floor near hot thermal vents.

12. What lives inside the body of a giant tube worm? How does this partnership help the giant tube worm?

Bacteria live within the body of the giant tube worms. These bacteria help the worms to obtain nutrition to grow up to 3 feet in a year.

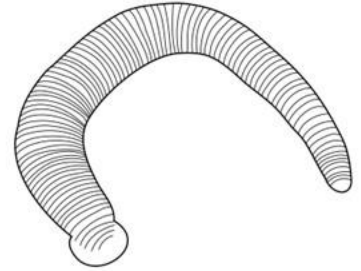


13. What is the purpose of the extendable tentacles on the spaghetti worm?

The extendable tentacles pick up food particles and bring them to their mouth. The mouth sorts the particles. Some of the particles are used to build up their tube while other are ingested as food.

14. Describe the symbiotic relationship between a sea star and annelid.

The scale worm lives between the tube feet of the sea star. The scale worm attaches to the sea star and moves with the sea star, eating leftover food from the sea star.



15. How do leeches mask their painful bite?

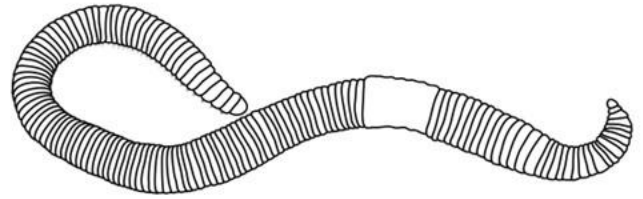
Leeches have an anesthetic chemical in their saliva that they inject into their victims. This allows them to feed without being detected.

16. How long can leeches go between feedings? **Several months**

17. How long can earthworms live? **7 years!**

18. If all the topsoil that earthworms have turned over was piled up, how many miles deep would the layer of soil covering the entire Earth be?

300 miles



19. How do earthworms benefit other organisms in the soil?

Earthworms recycle nutrients in the soil when they eat and poop.

20. **Conclusion Question:** How did watching this video expand your understanding of annelids?

Answers vary (many students enjoy learning about the variety of annelids and that most aren't earthworms!)

21. **Conclusion Question:** Where did most of the worms featured in this video live?

In marine ecosystems

THIS PRODUCT WAS MADE BY ...



THIS RESOURCE IS THE COPYRIGHTED PROPERTY OF RACHEL MILLER. YOU ARE LICENSED TO USE THIS RESOURCE IN YOUR OWN CLASSROOM AS A SINGLE-USER ONLY.

You may...

- Use and make copies of this resource with your own classroom students.
- Share files with your students on a private, password protected website (ex. Google Classroom or Canvas).
- Share the link to this resource on [Shape of Life](#) with another teacher or on a public page.

You may not...

- Share any parts of files or files on a public website, such as a school website or Facebook group. All access should occur through [Shape of Life](#).
- Claim this work as your own or create a derivative version of this work.
- Sell any files or combination of files. This resource is not for commercial use.

THANK YOU FOR PROTECTING THE HARD WORK THAT WENT INTO CREATING THIS RESOURCE!

LOOKING FOR MORE ZOOLOGY RESOURCES?

The cover for 'Zooology Unit 8 Phylum Annelida' features a collage of educational materials including notes, slides, and diagrams of earthworms. It includes a 'Science from SCRATCH' logo in the bottom right corner.

**Zooology Unit 8
Phylum Annelida**

Notes, Slides, Activities, & Test

The cover for 'Earthworm Anatomy Coloring Activity' shows a detailed diagram of an earthworm's internal anatomy with various parts labeled. It includes a 'Science from SCRATCH' logo in the bottom right corner.

**Earthworm Anatomy
Coloring Activity**

No prior learning needed!

The cover for 'High School Zoology Curriculum' features a vibrant photograph of a green tree frog with red eyes and blue spots. It includes a 'Science from SCRATCH' logo in the bottom right corner.

**High School Zoology
Curriculum**

Complete Bundle

MANY THANKS TO THE AMAZING ARTISTS WHOSE WORK IS INCORPORATED INTO THIS RESOURCE:



And special thanks to...

