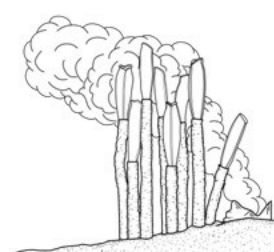
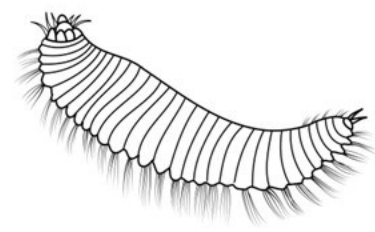


Name: \_\_\_\_\_



# SHAPE OF LIFE: ANNELIDA

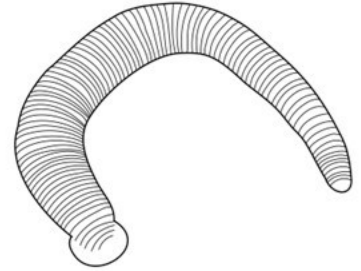
1. How many species of annelids have scientists identified? \_\_\_\_\_
2. What are some of the habitats that annelids have adapted to? \_\_\_\_\_
3. Describe how the sabellid eats. \_\_\_\_\_
4. What is on each appendage of the feather duster worm? \_\_\_\_\_
5. Annelids have a flexible \_\_\_\_\_ body along with a set of powerful muscles.
6. Do annelids have a nervous system and/or circulatory system? \_\_\_\_\_
7. What was the worm abarenicola very skilled at doing? \_\_\_\_\_
8. How do diopatra, a tube-dwelling worm, positively benefit the mud flats that they exist within? \_\_\_\_\_
9. How do diopatra make tubes? \_\_\_\_\_
10. Where do diopatra go when the tide recedes? \_\_\_\_\_
11. Where do giant tube worms live? \_\_\_\_\_
12. What lives inside the body of a giant tube worm? How does this partnership help the giant tube worm? \_\_\_\_\_



13. What is the purpose of the extendable tentacles on the spaghetti worm?

14. Describe the symbiotic relationship between a sea star and annelid.

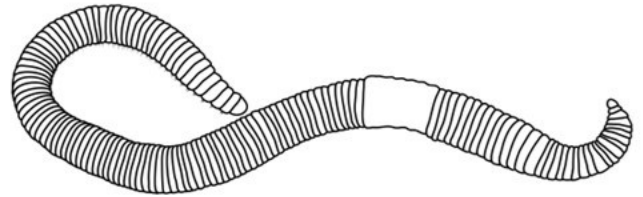
15. How do leeches mask their painful bite?



16. How long can leeches go between feedings? \_\_\_\_\_

17. How long can earthworms live? \_\_\_\_\_

18. If all the topsoil that earthworms have turned over was piled up, how many miles deep would the layer of soil covering the entire Earth be?



19. How do earthworms benefit other organisms in the soil?

20. **Conclusion Question:** How did watching this video expand your understanding of annelids?

21. **Conclusion Question:** Where did most of the worms featured in this video live?

# THIS PRODUCT WAS MADE BY ...



THIS RESOURCE IS THE COPYRIGHTED PROPERTY OF RACHEL MILLER. YOU ARE LICENSED TO USE THIS RESOURCE IN YOUR OWN CLASSROOM AS A SINGLE-USER ONLY.

## You may...

- Use and make copies of this resource with your own classroom students.
- Share files with your students on a private, password protected website (ex. Google Classroom or Canvas).
- Share the link to this resource on [Shape of Life](#) with another teacher or on a public page.

## You may not...

- Share any parts of files or files on a public website, such as a school website or Facebook group. All access should occur through [Shape of Life](#).
- Claim this work as your own or create a derivative version of this work.
- Sell any files or combination of files. This resource is not for commercial use.

THANK YOU FOR PROTECTING THE HARD WORK THAT WENT INTO CREATING THIS RESOURCE!

## LOOKING FOR MORE ZOOLOGY RESOURCES?

The cover for 'Zooology Unit 8 Phylum Annelida' features a collage of educational materials. It includes a diagram of an earthworm, a list of 'Annelida Basics' (e.g., 'Current of living systems: 32,850'), and sections for 'Respiratory System', 'Circulatory System', and 'Sensory System'. A 'Science from SCRATCH' logo is in the bottom right corner.

**Zooology Unit 8**  
*Phylum Annelida*

Notes, Slides, Activities, & Test

The cover for 'Earthworm Anatomy Coloring Activity' shows a detailed anatomical diagram of an earthworm with various parts labeled. It includes a 'Science from SCRATCH' logo in the bottom right corner.

**Earthworm Anatomy**  
*Coloring Activity*

No prior learning needed!

The cover for 'High School Zoology Curriculum' features a vibrant photograph of a green tree frog with red eyes and blue markings on its back. It includes a 'Science from SCRATCH' logo in the bottom right corner.

**High School Zoology**  
*Curriculum*

Complete Bundle

MANY THANKS TO THE AMAZING ARTISTS WHOSE WORK IS INCORPORATED INTO THIS RESOURCE:



And special thanks to...

