

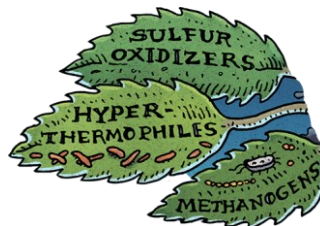
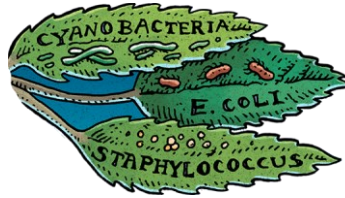
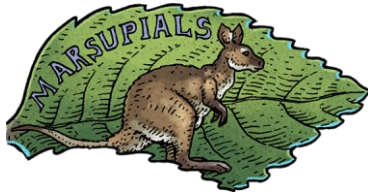
# Constructing the Tree of Life

Which organisms belong closer together on the evolutionary Tree of Life?

Cut out the leaves and group them based on shared characteristics.

You can research the organisms to learn more.

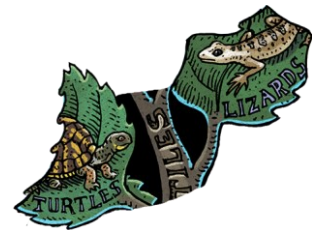
Hand-painted art © 2017 by Ray Troll. Digitally edited in 2024 by Rick Reynolds with permission.

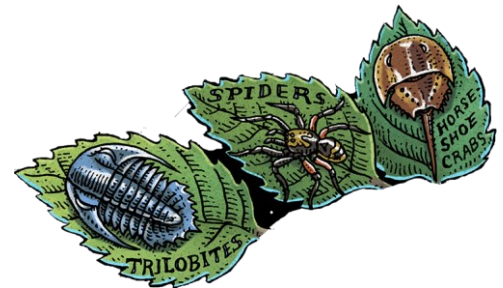
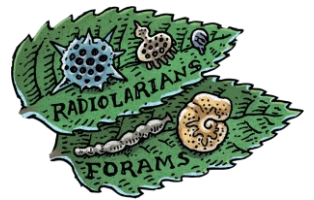


Print this sheet on the back of the page 1 cards to make it easier to separate them from the other cards.

Alternatively, you could draw a simple Shape of Life shell logo in the middle of the back of each page 1 card.









What favorite organism(s) would you add to the Tree of Life? Where would they go on artist Ray Troll's tree?

**Think About It!** Record your ideas below, on separate paper, or on a computer using words and pictures.

1. What evidence supports scientific beliefs in the common ancestry of living things and biological evolution? (NGSS HS-LS4-1)
2. What scientific ideas explain the similarities and differences among modern organisms and between modern and fossil organisms? What are some shared traits of different organisms that help show the evolutionary relationships between them? (NGSS MS-LS4-2)